



**Sustainable
Libraries
Initiative**

The latest news and updates from the [Sustainable Libraries Initiative](#)

NEWSLETTER



NEWS & ANNOUNCEMENTS

Longwood Public Library Certification - 1
Back to School Supply Drives - 1
Member News - 2
Disaster Preparedness Month - 3
Vendor Spotlight - 4

BACK TO SCHOOL SUPPLY DRIVES

Our member libraries are showing that [Back to School Supply Drives](#) are a great way to demonstrate the collective impact that your library and it's patrons can have in the community. A [2020 report](#) estimates that parents spend about \$100 per child on school supplies. For families that are experiencing financial insecurity, and especially those with multiple school aged children, these costs can be prohibitive.

continued on page 2...

CONGRATULATIONS, LONGWOOD PUBLIC LIBRARY!

We are thrilled to announce that [Longwood Public Library](#) (pictured above), in Middle Island, is our latest certification recipient! Their efforts to achieve certification include a [LEED Platinum Certified](#) building, careful consideration of the needs of their community, and collaboration with local organizations that resonate with an increased benefit to all. Going through the certification process led to increased awareness of sustainable decision making by the library staff. Their thoughtful and comprehensive submission for certification is highlighted in their [final presentation](#) and showcased on their website's [Sustainability page](#).



Follow us on social media

BACK TO SCHOOL, CONTINUED

Holding a drive to collect supplies can raise awareness of the financial hardships experienced by some of our community members and allow any individuals who can contribute to be part of an action that has a larger impact. Starting the school year off with a backpack full of the necessary supplies, can help a child get off to a better, more secure start.

Partnering with other non-profits in your community such as [Volunteers of America](#) and their [Operation Backpack Campaign](#), [United Way](#), [advocacy groups](#) for people experiencing homelessness, and [municipalities](#), libraries can mobilize their patrons to bring in needed supplies, enlist teens to sort items and fill backpacks, or trade [school supplies for fines](#). Collaborating with [local schools](#) could help your library identify the needs and help to alleviate the burden on teachers as they are often expected to fill the gaps in supplies sent in by the students.



[Phoenicia Library](#) worked in collaboration with [Woodstock Library](#) and [Provisions Woodstock](#), a local catering business, to collect supplies.



[Sachem Public Library](#) used social media to promote their drive

MEMBER NEWS

This month we are welcoming [Gardiner Library](#) in New Paltz, NY into our Certification Program and our very first membership level participant, Jensen Adams from Kansas City, Missouri.

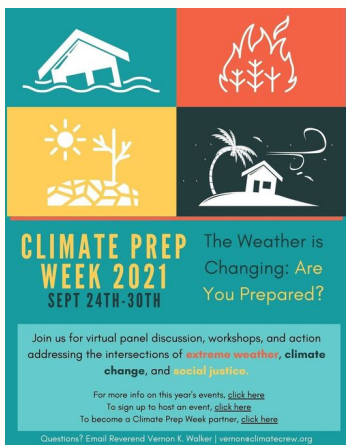
[Lindenhurst Memorial Library](#) demonstrate their commitment to sustainable programming by dedicating a section of their newsletter to promote these programs. Their "[Let's get Sustainable](#)" section includes several programs for their community to learn more about home composting, waste reduction, and reflect on the impact that climate change has had on their own community.



Follow us on social media

DISASTER PREPAREDNESS MONTH / CLIMATE PREPAREDNESS WEEK

September is [National Preparedness Month](#). The [Ready.gov](#) website provides resources to increase awareness of the importance of preparing for disasters. The month is organized into [weekly themes](#) focusing on making a plan, building an emergency kit, preparing for disasters, and educating youth about emergency preparedness. Library programming ideas in conjunction with National Preparedness Month include planning a blood drive, collaborating with the [Office of Emergency Management](#) to plan [region specific](#) disaster programming for your community, or host a [first aid](#) or [disaster response training](#). [Ready.gov](#) has [resources](#) available in English and Spanish with several videos highlighting topics such as the preparation needs specific to individuals with disabilities. Within your library, it is a good time to update your emergency response plan and communicate any changes to your staff. The [Massachusetts Library System](#) has created a helpful [guide](#) for libraries to organize programs for their communities during [Climate Preparedness Week](#), September 24th-30th. Their helpful list of [programming ideas](#) can get you started.

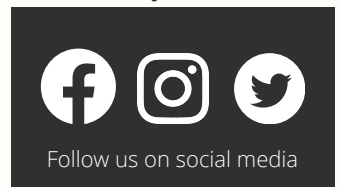


NEWS BRIEF

SLI co-founders, Rebekkah Smith Aldrich and Matthew Bollerman have been appointed to ALA Council's [Committee on Sustainability](#). With Rebekkah serving as Chairperson, this committee will work with ALA leadership and committees to infuse the core value of sustainability throughout the policies, practices, and activities promoted by the ALA, it's committees and divisions.

DISASTER PREPAREDNESS, CONTINUED

Climate Preparedness Week was es by Communities Responding to Extreme Weather (CREW) who are a network of regional leaders in the US who are working together to educate about climate change through programming for families and communities. Their website lists [resources](#) with an emphasis on gathering information relevant to your own community and what specific effects of climate change you may be experiencing now and in the coming years. They offer [tools](#) to gather information, prepare for extreme weather events, assess the potential impact to your community, and guidance on creating strategies for resilience in your communities.





VENDOR SPOTLIGHT: PRINT RELEASE

The Sustainable Libraries Initiative is partnering with PrintRelease to offer libraries the opportunity to offset paper usage with reforestation projects. PrintRelease is a certification system and platform developed to track and manage businesses' paper usage to seamlessly replant trees based on the number of copies used. Through the partnership with PrintRelease and CCP Office Technology Solutions, a print management service based in Farmingville, NY, PrintRelease has established a dashboard that will allow any SLI Member Institution to be included in a total count of trees replanted for our organization. PrintRelease partners with commercial and office print services companies nationwide. Ask your print service provider if this is a service that is offered and let us know if you would like to be included in the SLI Dashboard. The visually impactful dashboard or embeddable widget lets your community see the number of trees planted and where you have chosen to allocate these efforts.

CALL FOR ITEMS

Have you created a library policy or program with sustainability in mind? Share your ideas with our community! Contact sliadmin@suffolknet.org to be featured in our newsletter or on the SLI Website.

UPCOMING EVENTS

SLCP Online Meetups

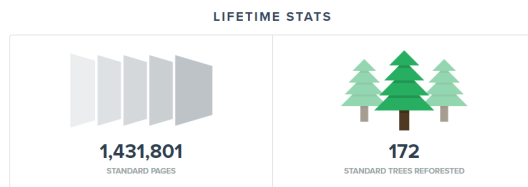
Thursday, September 2nd, 11:00 am EST

Thursday, October 7th, 11:00am EST

Sustainable Thinking Builds Strong Libraries and Resilient Communities

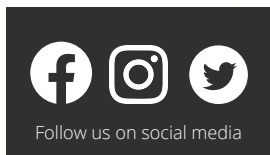
Core Forum, a division of ALA

Saturday, October 9, 2021 from 10:00 am - 11:00 am at the Renaissance Baltimore Harborplace Hotel



Sustainable Libraries Initiative customers have collectively offset the equivalent of 1.43M letter pages of paper consumption by reforesting 171.82 trees since joining PrintRelease in August 2021.

[Facebook](#) [Twitter](#) [LinkedIn](#) [YouTube](#)



Don't miss our important news: Please add sli-newsletter@lists.suffolknet.org, sli-public@lists.suffolknet.org, or sli-schools@lists.suffolknet.org to your address book to keep our newsletter out of your junk or spam folders!