

University of Maryland Libraries

Sustainable Library Certification Program
Final Presentation



UNIVERSITY OF
MARYLAND

**FEARLESSLY
FORWARD**

Section A: Setting the Stage

A.1: Identify key stakeholders

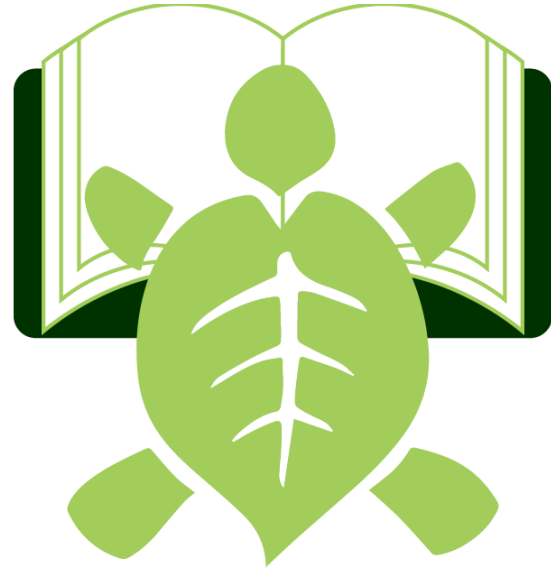
In 2011, the University of Maryland Library System took a bold step toward environmental stewardship by establishing the Library Sustainability Committee. What began as a small group of passionate staff has grown into a long-standing, committed team—many of whom are original founding members still leading the way today. Their leadership laid the foundation for everything we've accomplished in this certification process and their support has been instrumental every step of the way.



Section B: Campus Involvement

B.3: Community collaborations

As our sustainability efforts grew, we wanted to raise awareness of the library's role on campus. We collaborated with the UMD Office of Sustainability to create a co-branded logo featuring their signature leaf turtle, helping spotlight our commitment and increase visibility within the campus community.



Section C: Community Engagement

C.3: Off-campus collaborations

The University of Maryland Library System's High School Visits Program partners with local schools to welcome students and educators into our libraries.

Through hands-on experiences with research tools and information literacy instruction, we extend our resources beyond the university and support college readiness in the wider community.



Section D: Social Well-Being

D.16: Student involvement in research

The Speaking of Books Series, hosted by Research Education at the University Libraries, offers free public talks by UMD faculty on their newly published work. The most recent event featured Professor Shanna Pearson-Merkowitz discussing, *The Power of Partisanship*, which explores how growing political polarization shapes American behavior both politically and socially.

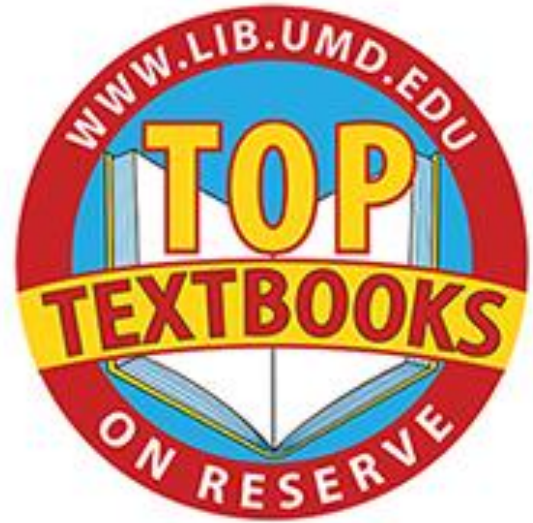


Section E: Financial Sustainability

The UMD Libraries align annual budgeting and strategic planning with university goals to support student success and sustainability.

Our Top Textbooks on Reserve program has saved students over \$1.5 million by providing free access to materials for 150 high-enrollment courses.

In 2025, we also launched the Lulu Barnachea Memorial Sustainability Fund to support long-term green initiatives.



Section F: Collection and Services

UMD Libraries follow comprehensive collection development policies that incorporate sustainability principles. We lead campus efforts in records management, supported by a dedicated electronic records archivist. As members of the Big Ten Academic Alliance and University System of Maryland, we also participate in collaborative, sustainable practices like shared print repositories.



Section G: Organizational Commitment

G.4: Certified facilities/buildings

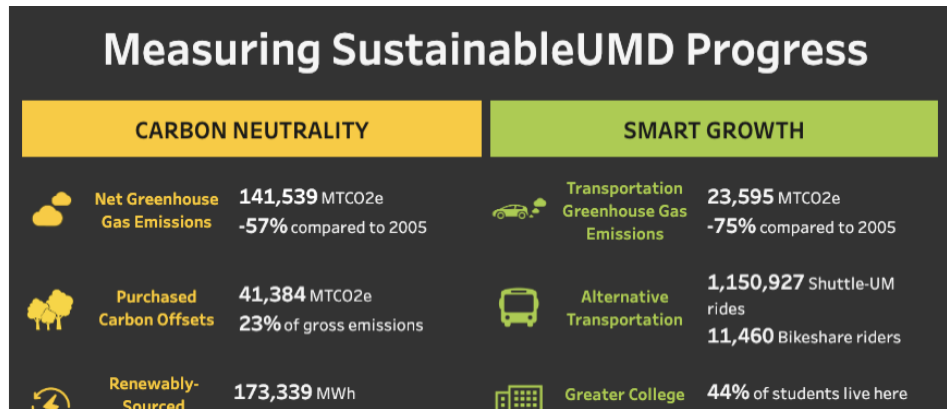
Between 2010 and 2022, UMD constructed or renovated 23 buildings to meet LEED Silver or higher standards—representing approximately 13% of total campus square footage.



Section H: Benchmarking

H.7: Monitor your progress

Progress is monitored through Terp Footprints, which tracks key sustainability metrics in real time. Facilities staff compile annual data to quantify outcomes and cost savings, which are reported to stakeholders through the SustainableUMD Progress Hub.



Section I: Education & Influence

I.3: Campus-wide Earth Day celebration

For Earth Day 2025, UMD Libraries took part in the UMD Student Government Association's annual Earth Fest with a “Fact or Fiction” game, engaging students in eco-literacy education through interactive trivia and conversation.



Section J: Water Management

J.3: Identify plants around the library

The landscape surrounding McKeldin Library features a variety of native plants, including Red Columbine, blue-eyed grass, Wild Geranium, **Wild Blue Phlox** (top), and **White Fringetree** (bottom). In collaboration with UMD's Arboretum and Botanical Gardens staff, we help maintain garden areas that blend native and non-invasive exotic species to support biodiversity, campus aesthetics, and student learning.



Section K: Energy Management

K.7: “Turn off lights” signage

Besides the few conference rooms that have not been updated, all of the UMD library buildings have motion-sensored lighting. The pictures below show the few remaining signs for such conference rooms



Section L: Waste Management

L.2: Conduct waste audit

On May 2, 2025, the Libraries partnered with UMD Facilities Management to host the first-ever waste audit at McKeldin Library. With 20 volunteers, we sorted nearly 90 pounds of waste. The event drew major campus attention, earning front-page coverage on two school newspapers and over 6,000 views on social media. Plans are already underway for a follow-up audit at Hornbake Library.



Waste Audit News Coverage



UMD students promote recycling, composting at first library waste audit

Nicole Pilsbury · 4 days ago



A person sorts through trash during the trash audit behind McKeldin Library on May 2, 2025. (Neelay Sachdeva/The Diamondback)

University of Maryland volunteers sorted through and recorded data on waste from McKeldin Library at the library's first waste audit on Friday.

UNIVERSITY OF MARYLAND

MarylandToday

TUESDAY, MAY 06, 2025

Produced by the Office of Marketing and Communications

SUBSCRIBE NOW

ATHLETICS

ARTS & CULTURE

CAMPUS & COMMUNITY

PEOPLE

RESEARCH

CAMPUS & COMMUNITY

The Dirty Details of McKeldin's Trash

Library's Waste Audit Gathers Info With Goal of Improving Sustainability

By Sala Levin '10 / May 06, 2025

f

t

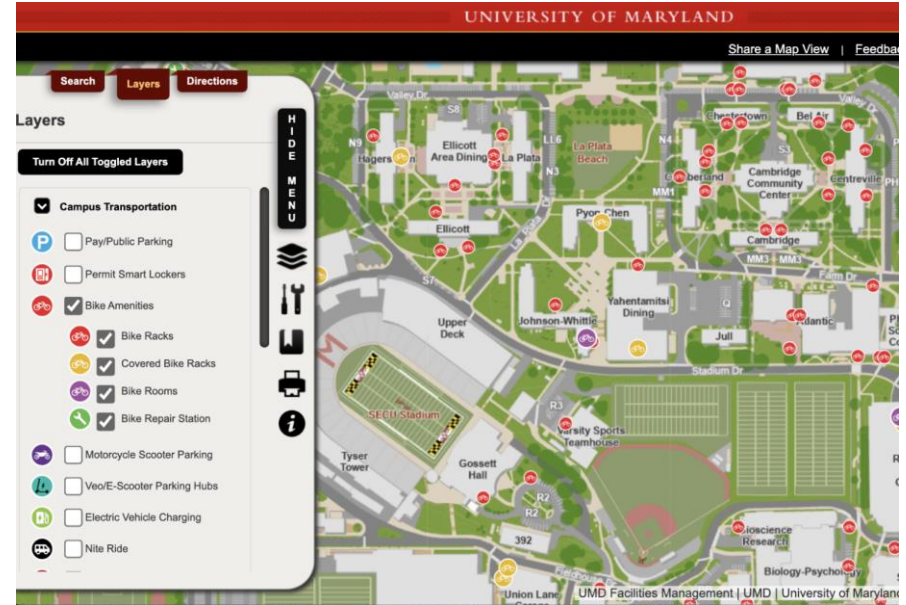
e

p

Section M: Transportation Management

M.4: Bicycle racks and loan program

The University of Maryland Transportation Services has a robust biking program with a plethora of programs and resources. A key tool is the campus bike resource map, which shows the locations of bike racks, repair stations, and other amenities to make biking more accessible and convenient for the campus community.



THANK YOU 



UNIVERSITY OF
MARYLAND

**FEARLESSLY
FORWARD**