

An Introduction to your membership in the

Sustainable Libraries Initiative

Presented by: Rebekkah Smith Aldrich, SLI Co-Founder & Advisory Board President &
Matthew Bollerman, SLI Co-Founder & Advisory Board Vice President



**Sustainable
Libraries
Initiative**



**Maine Library
Association**



Maine Library
Association

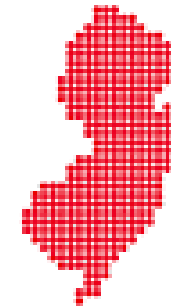


VIRGINIA LIBRARY
ASSOCIATION

ASSOCIATION
OF RESEARCH
LIBRARIES



IOWA
LIBRARY
ASSOCIATION



NEW JERSEY

NJLA

LIBRARY ASSOCIATION



Vermont
Community
Foundation

NEW YORK LIBRARY ASSOCIATION

The Voice of the Library Community



Massachusetts
Library Association

A new opportunity...

- Free Sustainable Libraries Initiative membership for all MLA Members
- Discount on the Sustainable Library Certification Program



**Sustainable
Libraries
Initiative**



**Maine Library
Association**

Sustainable Libraries Initiative

Launched in 2015 as a community of practice for library leaders interested in addressing issues related to **climate change, community resilience and securing a vital, vibrant, and visible place** in the community/on campuses/in schools for libraries.



**Sustainable
Libraries
Initiative**



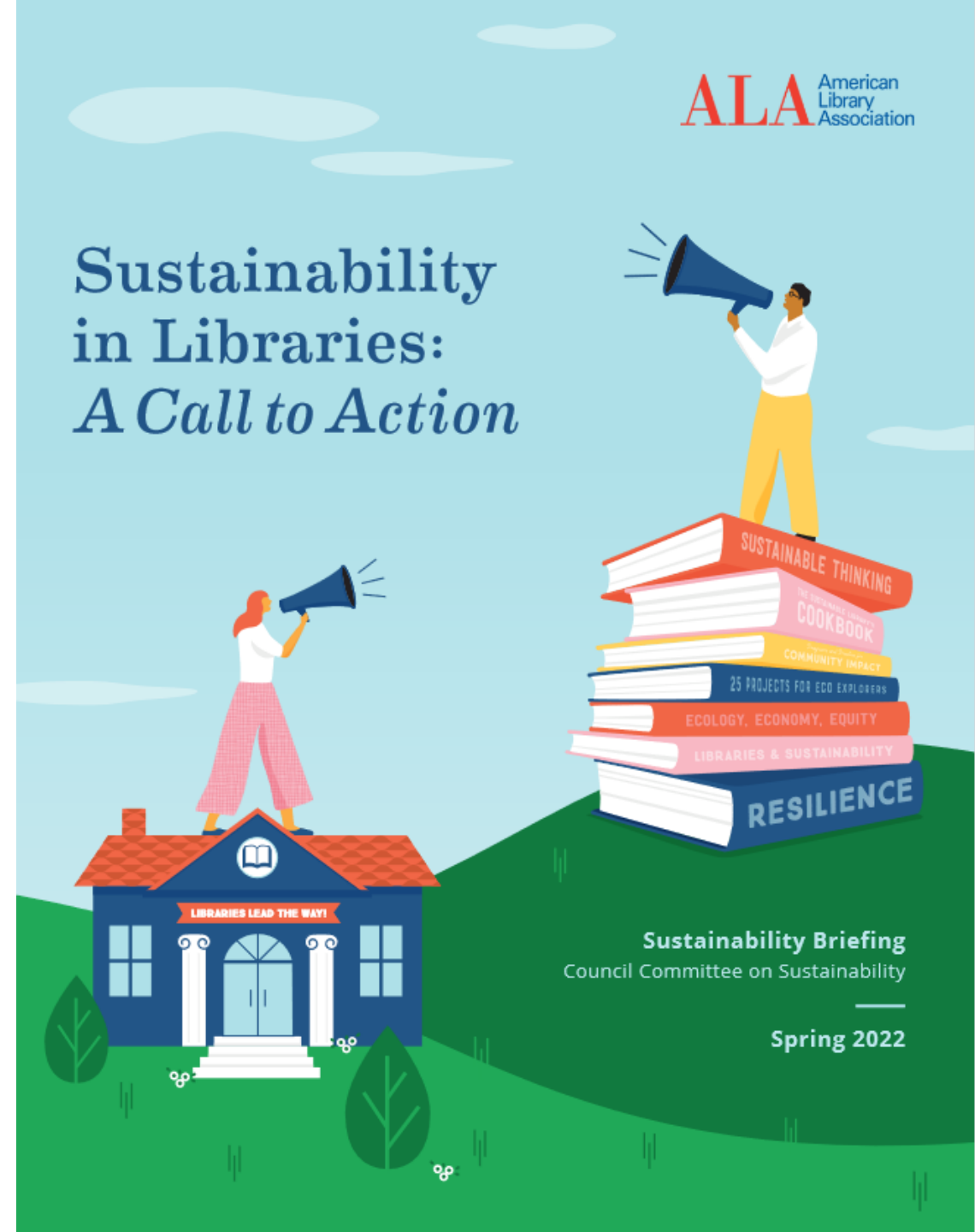


Image Source: National Centers for Environmental Information, NOAA

The climate crisis will
profoundly affect the health
of every child alive today.

THE LANCET

“**Climate change** is the single greatest threat to global health, a “**code red for humanity**,” and is this generation’s **grandest challenge**.”



Sustainability in Libraries: *A Call to Action*



Sustainability Briefing
Council Committee on Sustainability
Spring 2022



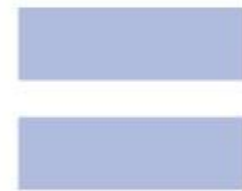
Sustainability = Core Value





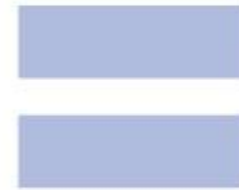
**EVERY
JOB
IS A
CLIMATE
JOB**

**PROJECT
DRAWDOWN.**



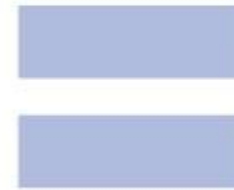
**Sustainable
Libraries
Initiative**

→ Reduce Greenhouse Gas Emissions



**Sustainable
Libraries
Initiative**

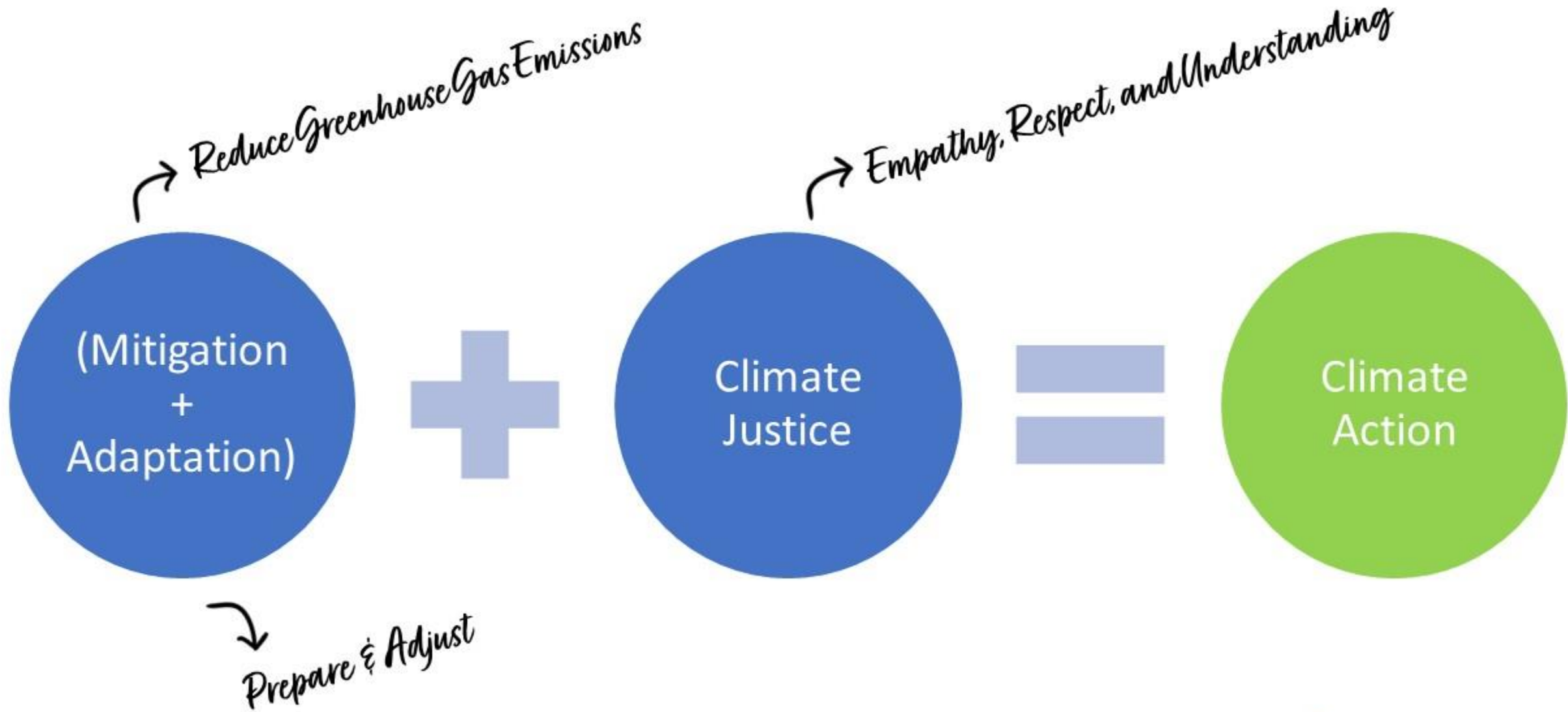
→ Reduce Greenhouse Gas Emissions



↘ Prepare & Adjust



**Sustainable
Libraries
Initiative**



National Climate Action Strategy for Libraries

1 | Climate Change Mitigation

Libraries align greenhouse gas emission reduction goals with those that international climate scientists and policy makers have indicated are necessary to prevent catastrophic cascading effects. This strategy recommends a goal for all libraries to reduce their institution's greenhouse gas emissions by 43%, from 2015 levels, by 2030 and to achieve net-zero greenhouse gas emissions by 2050.¹

2 | Climate Change Adaptation & Contributions Community Resilience

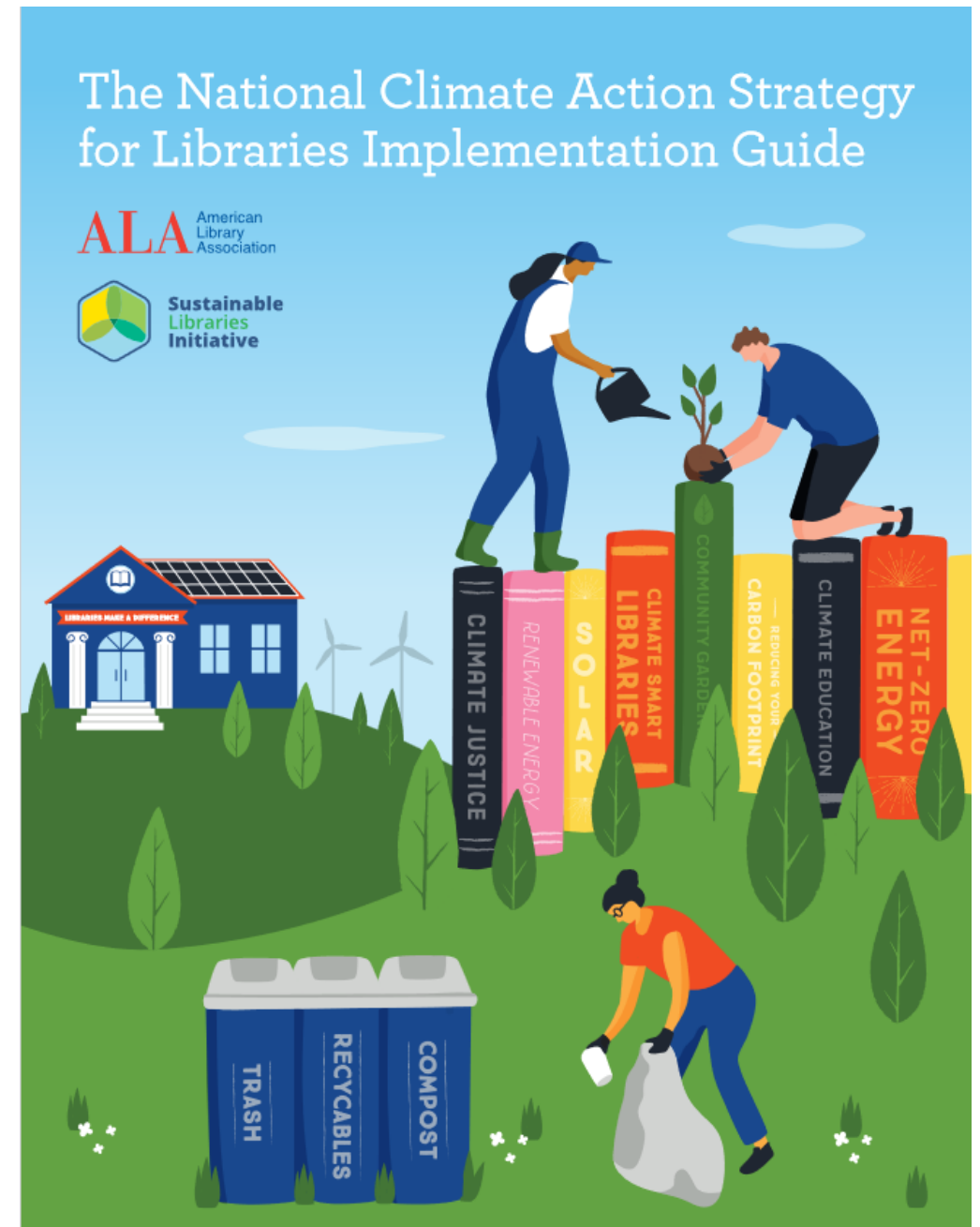
Libraries adopt both internal disaster preparedness plans and strategic goals that speak to the most likely climate hazards facing their area to contribute to their community's resilience.

3 | Climate Justice Work

Libraries harness the transformative power of education for climate justice and develop relationships with local community organizations working on climate justice to embed a deeper awareness of the intersection of human and civil rights with climate stewardship than is presently found.²

¹ Paris Agreement, United Nations, https://unfccc.int/sites/default/files/english_paris_agreement.pdf

² Principles of Climate Justice, Mary Robinson Foundation, <https://www.mrfcj.org/principles-of-climate-justice/harness-the-transformative-power-of-education-for-climate-stewardship/>

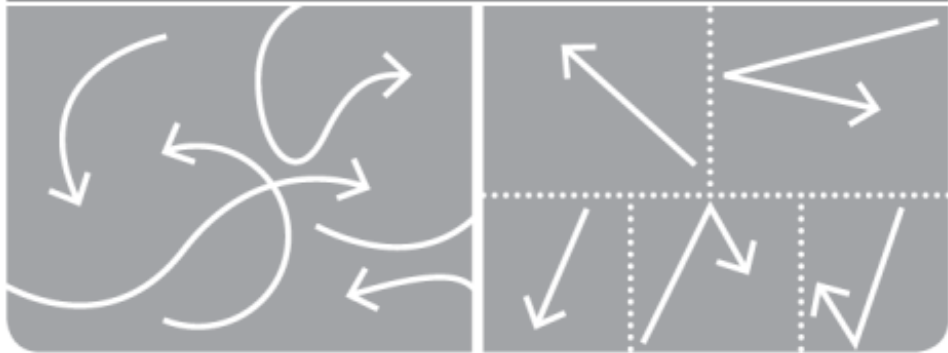




CENTER FOR THE FUTURE OF LIBRARIES

ALA American Library Association

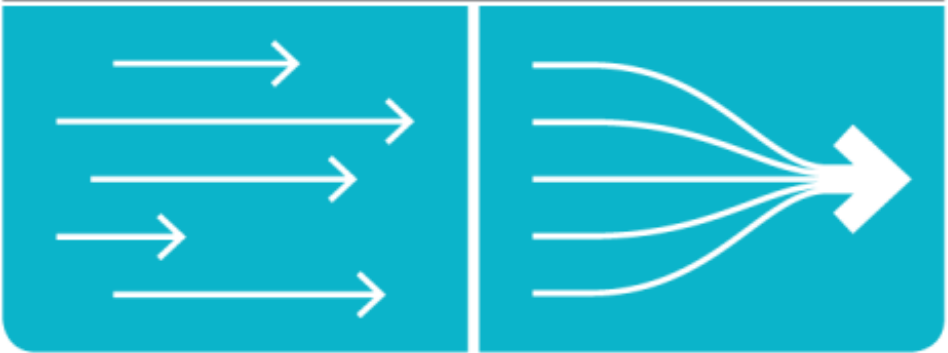
OLD / CURRENT BEHAVIOR



DISORDER & CONFUSION

ISOLATION

NEW BEHAVIOR



ALIGNMENT

COLLECTIVE IMPACT

Graphic: AllHandsRaised.org

Sustainable Libraries

- ✓ **Strong & Authentic Institutions** that live their values out loud
- ✓ Catalyst for **Social Cohesion & Civic Participation** in Communities
- ✓ Working on **Climate Mitigation** (reducing Greenhouse Gas Emissions (GhG))
- ✓ Active Participants in **Climate Adaptation** (strengthening community resilience)



**Sustainable
Libraries
Initiative**

“You've got to think about **big things** while you're doing **small things**, so that all the small things **go in the right direction.**”

-Alvin Toffler , futurist



Triple Bottom Line Definition:

- Environmentally Sound
- Socially Equitable
- Economically Feasible

Growing Community of Practice

150+ libraries across the country are enrolled in the Sustainable Library Certification Program

- Access to the final presentations of certified libraries
- Sample policies
- Vendor list populated by libraries in the program
- Practical advice at monthly meet-ups
- Stories from the field in our monthly newsletter



**Sustainable
Libraries
Initiative**

Benefits

Available upon claiming your free 12-month SLI Membership



Maine Library
Association

Policy Examples

A.5: Sustainability Policy

A.6: Purchasing Policy

D.3: Library Travel Policy

D.5: No-Idling Policy

H.1: Partnership Policy

I.1: Commitment to Equity, Diversity and Inclusion

J.1: Commitment to Community Resiliency

L.1: Collection Development Policy

A.5: Sustainability Policy

Your library's Sustainability Policy will set the tone for decision making at all levels of your institution. Declaring that you will factor triple bottom line sustainability into your institution's decision making process will let all library stakeholders know that these considerations are fundamental to operations.

- [Comsewogue Public Library Environmental Sustainability Policy](#)
- [Kalamazoo Public Library Environmental Stewardship and Sustainability Policy](#)
- [Lindenhurst Memorial Library Sustainability Policy](#)
- [Mid-Hudson Library System Sustainability Policy](#)
- [Patchogue-Medford Library Sustainability Policy](#)
- [Plainedge Public Library Sustainability Policy](#)

A.6: Purchasing Policy

Products purchased for use in the library should factor in the environmental costs. These considerations could include the packaging, ingredients, and whether the item can be found from a local retailer or supplier. A purchasing policy should explicitly prioritize the best choice for environmental and social responsibility.

- [Palisades Free Library Environmental Policy](#)
- [Saratoga Springs Public Library Environmental Policy](#)
- [Palos Verdes Library District Sustainable Purchasing Policy](#)
- [Illinois Library Guide to Green Libraries: Purchasing](#)



**Sustainable
Libraries
Initiative**

Live & On Demand Training

- Library for Health and Wellbeing: A Strategic Framework
- Climate Adaptation for Library Facilities
- Sustainability Challenge: Month-by-Month
- Repair Cafes
- Workplace Wellness
- Beyond Lightbulbs and Solar Panels: Triple Bottom Line Sustainability
- Diversity, Equity, and Inclusion in a Sustainable Library
- Community Gardening
- Measuring Sustainability in Libraries



**Sustainable
Libraries
Initiative**

Custom CO₂ Calculator



[View](#)
[History](#)
[Revisions](#)

| Input Your Use | Emission Type | CO2 Emissions |
|---|---------------|-------------------|
| Electricity | | |
| <input type="text" value="0"/> ⌵ ⌶ KWh | Electricity | 0.000 metric tons |
| Building Fuel | | |
| <input type="text" value="0"/> ⌵ ⌶ Gallons | Fuel Oil | 0.000 metric tons |
| <input type="text" value="0"/> ⌵ ⌶ Therms | Natural Gas | 0.000 metric tons |
| <input type="text" value="0"/> ⌵ ⌶ Gallons | LP Gas | 0.000 metric tons |
| Fleet Fuel | | |
| <input type="text" value="0"/> ⌵ ⌶ Gallons | Gasoline | 0.000 metric tons |
| <input type="text" value="0"/> ⌵ ⌶ Gallons | Diesel | 0.000 metric tons |
| Business Travel | | |
| <input type="text" value="0"/> ⌵ ⌶ Miles | Vehicle | 0.000 metric tons |
| <input type="text" value="0"/> ⌵ ⌶ Miles | Bus | 0.000 metric tons |
| <input type="text" value="0"/> ⌵ ⌶ Miles | Train | 0.000 metric tons |

Program Idea Bank

Bee Hotels

Bees may be some of the hardest workers, but so are Lindenhurst's Summer Camps Campers!

Audience: Teens

Program Type: Educational

[More Details](#)

Local Snacks, Global Issues

Ever heard that "April showers bring May flowers?" We're prepping for May flowers during these April showers. Join us inside for a little while longer to enjoy some local snacks and global films to inspire and activate your year. Together we can change the world.

Audience: Adults

Program Type: Educational

[More Details](#)

Big Tiny Art Show

The Big Tiny Art Show provided community groups and members of all ages as well as staff to create small paintings of any type of art of their choice. A community art exhibit was held at the culmination of the program featuring over 700 works from community members, groups, and staff.

Audience: Everyone

Program Type: Display

[More Details](#)

DIY Rainbarrels

Maximize the potential of rain water! Harvesting rainwater helps conserve water and protect our waterways from polluted runoff! Learn how to make your own Rainbarrels for your library to harvest rain water to further use throughout your landscape.

Audience: Adults

Program Type: Educational

[More Details](#)

Now We're Walkin'! Staff Challenge

Longwood Public Library staff walking challenge to promote health and wellness amongst staff. Complete with 8 different walking activities for staff to engage in including incentives in the form of a raffle.

Audience: Adults

Program Type: Passive

[More Details](#)

Clothing Swap

At the Shelter Island Public Library a group of local women have decided to keep clothes out of the landfill by holding monthly clothing swaps under the Library tent. They bring the clothes and the Library provides tables, storage space when possible and access to a bathroom and water.

Audience: Everyone

Program Type: Passive

[More Details](#)

No Mow May

Promoting healthy environments for pollinators by allowing grass to grow long. By not mowing a small patch of our lawn for the month of May, the Library is taking a small step towards creating a more abundant and diverse habitat for our pollinators.

Audience: Everyone

Program Type: Passive

[More Details](#)

DIY Emergency Kit

Wish you were confident in your ability to thrive in an emergency? Make sure you're not the person searching for that flashlight you were sure you thought you had.

Audience: Adults

Program Type: Educational

[More Details](#)

Vendor List



Know of a vendor we should add to this list? [Suggest a vendor.](#)

Filters

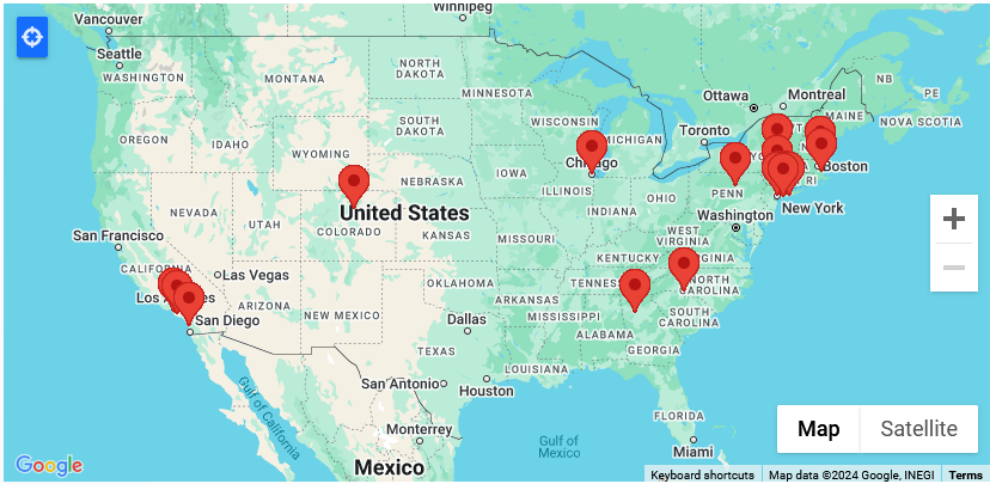
Search

City

State

Category

- Energy
- Gardening
- Grants
- Programming
- Recycling
- Reforestation
- Supplies
- Sustainable Community Resources
- Wellness



ALA Sustainability Round Table

Connect with other librarians through ALA's Sustainability Round Table (SustainRT).

Address:

American Lamp Recycling

Lamps and Light Bulbs Browse our website for fluorescent lamp recycling kits to get the sizing you need. If you own a business, you know how important it is to maintain a safe, healthy environment for your employees and your customers. At American Lamp Recycling,

Climate Action Plan Template



Climate Action Plan Template

Think about your library and community and all you've learned about climate change through this series. Below, brainstorm ways your library can change or things that could be done that would have a positive impact on the local and global community.

Part 1: Climate Change Mitigation

- A. Brainstorm ways your library can reduce its carbon footprint:
 - a. Facility
 - i. What would it take to make your facility net zero?
 - b. Operations
 - c. Transportation
 - d. Materials Management
- B. How can the library use its facility as a "living laboratory" to educate visitors about how the library works to reduce its carbon footprint?
- C. What collections, programs, services, and partnerships can the library seek to help accelerate climate change mitigation in the community?

Part 2: Climate Change Adaptation

- A. What are the climate hazards in your region?
- B. What needs to be done to minimize service interruptions at your library?
 - a. Staff Preparation & Education



SLI-ALA eCourse: 25 free seats

Sustainable Librarianship: Core Competencies and Practices

4-week asynchronous eCourse

- Gain a strong understanding of the **“triple bottom line”** definition of sustainability as adopted by the American Library Association as a Core Value of Librarianship.
- Have the ability to accurately describe **operational decisions, services, programs, and partnerships** their library is already undertaking that better position their institutions as sustainability leaders.
- Make operational decisions as well as **design new services, programs, and partnerships** to ensure their institutions are relevant and responsive in the face of the impacts of climate change using the **“sustainable thinking”** model.
- Understand the importance of **equity, diversity, and inclusion in the context of climate justice**.



Coming Soon!

Enhanced **Climate Action Lab** Resources

- Identify your region's climate hazards
- Climate Resilience Brief for Administrators to help make the case
- Climate Action Plan template
- Funding Sources



**Sustainable
Libraries
Initiative**

SUSTAINABLE LIBRARIES INITIATIVE



Read Map to

SUSTAINABILITY



Sustainable
Libraries
Initiative



Sustainable Library Certification Program



Sustainable
Libraries
Initiative

<https://sustainablelibrariesinitiative.org/>

SCAN ME





Sustainable Library Certification Program

Public & Academic Libraries

- Organizational Commitment
- Energy, Land, and Water Use
- Waste, Recycling & Purchasing
- Partnerships
- Community Involvement
- Social Equity
- Community Resiliency
- Financial Sustainability
- Collections

SCAN ME



School Librarians

- Partnerships & Community Involvement
- Leading Beyond the Library
- Social Equity & Resiliency
- Standards & Curriculum
- Collections



**Sustainable
Libraries
Initiative**

<https://sustainablelibrariesinitiative.org/>



Sustainable Libraries Initiative

<https://sustainablelibrariesinitiative.org>



**20% discount
for MLA
Members**

Free

- Newsletter
- Mobile App
- Webinars
- Resources
- Facebook Page & Instagram

FREE FOR MLA MEMBERS

- Curated Resources
- Access to On Demand Training
- CO₂ Calculator
- Vendor and Program Ideas
- American Library Association - SLI eCourse

Sustainable Library Certification Program

- Online Dashboard to Track Action Items
- Example policies, program ideas, and more
- Assigned Mentor
- Meet Ups with Others in the Program



**Sustainable
Libraries
Initiative**

MLA members new to the SLI receive one-free year of membership

To opt-in:

- Go to the Sustainable Libraries Initiative website:
<https://www.sustainablelibrariesinitiative.org/SLI-Membership>
- Choose the membership type and fill out the membership form
- When you get to "How did you hear about us?" - select "Other" and enter MLA Member in the Notes Field to waive the membership fee.

MLA members can also receive a 20% discount for the Sustainable Libraries Certification Program (SLCP).

- Email sliadmin@suffolknet.org for information and details.

